

PRESS RELEASE

The Container Monitoring Committee convener, Charles George has brought to the notice of the Custom House , cochin that due to installation of



the Drive Through Container Scanner at ICTT , the container operators/ Drivers are raising health related issues and the Container Monitoring Committee are getting complaints from the drivers. They also allege that multi axle lorries are losing their work. It is time to make aware that only 12% container got selected for the scanning in the month

of November 2018 out of 16733 import containers arrived in DP world. The list of containers selected for scanning are available in advance with the DP World, All CFS's and the Container Scanner Division , so that the trailers operators get enough time to make necessary arrangement before the loading of the scanned containers.

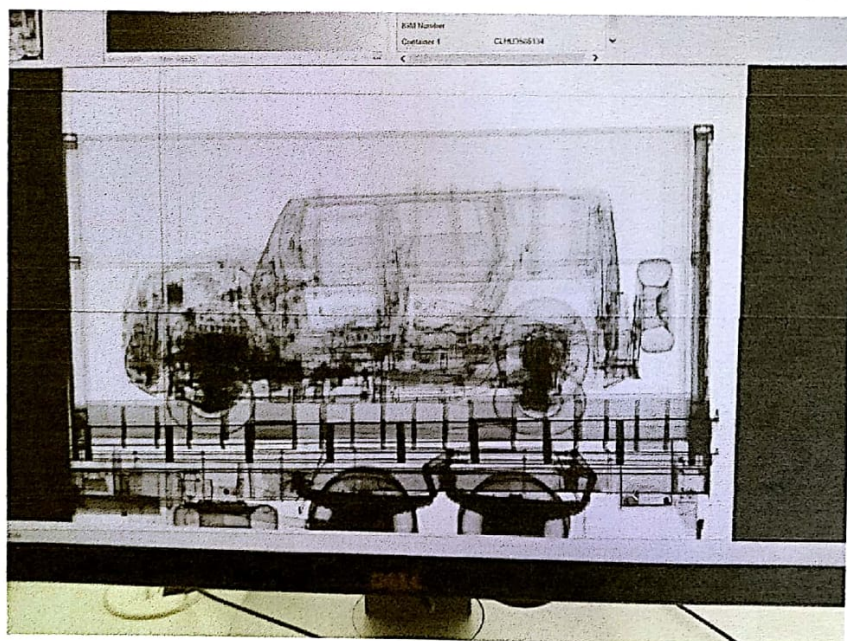
The Customs House, Cochin has conducted two awareness programmes for all the stakeholders and trailer drivers. First awareness programme was conducted by the Custom House, Cochin at Bolgatty Palace Hotel on 22.10.2018 in which Chief Medical Physicist of Aster Medicity Dr. Gopinath Menon, delivered the awareness speech and thereafter Dr. Gopinath Menon and Shri Alok Pandey, Senior scientist , AERB cleared the doubts related to radiation aspects and told that the Container scanner is safe.

The Second awareness programme was conducted by the Customs House, Cochin on 15.11.2018. The resource person included Chief Medical Physicist of Aster Medicity Dr. Gopinath Menon, delivered the awareness

speech and replied to queries of all present. Representative of Rapiscan Systems also explained detailed operating mechanism of the scanner and safety aspects of the system and also distributed brochure on safety features in regional languages .

The Rapiscan model Eagle P60 is a Drive Through Container Scanner , which is imported from USA and adheres to the guidelines issued by Atomic Energy Regulatory Board (AERB), Government of India and takes approximately 13 seconds to scan a container. Scanning starts only when Driven cabin crosses and there is gap of 50 cm between Driver's cabin and the container. There are no radioactive materials in the Container Scanner. Drivers who take 1000 trips per year will get 0.12 mSv/year, as against average natural background radiation of 2.36 mSv/year for the world and 10 mSv/year for Kerala.

The Eagle P60 is 6 MeV X Ray imaging system that enables inspection of dense cargo, verification of manifest and identification of contraband such as weapons ,explosives, narcotics etc. The similar Container Scanner model Eagle



P60 are successfully working in Mundra, JNPT, Mumbai and Krishnapattam in India and in many other countries around the world.


This is bring to the kind notice to all stakeholders that this facility is a part of Logistic chain which involves importers, Exporters, General Trade, Port Terminal Operators, Shipping Lines, Shipping Agents, Container Freight Stations and Customs

Brokers. Customs is responsible for ensuring prompt and effective scanning of containers which takes just 13 seconds to scan a container. The container scanner is certified by Atomic Energy Regulatory Board, Govt of India and is fully safe and complied with all safety requirements. Container Scanner with

conveyer belt is old system and all ports around the world are shifting towards the Drive Through Container Scanner.

Therefore it is requested that any kind of misinformation which will have negative effect on the economy and trade of Kerala is extremely regrettable. So far even a single Custom formation in the country where such similar Container scanners are working has not reported any incident which is adverse to the health of operators, Custom Officer, Drivers , Port staff etc. No complaints have been received by the Custom House , Cochin about the physical difficulties received due to radiation while passing through the Container Scanner .Therefore all such apprehensions lack any foundation.

The Container Scanner will help Kerala trade to save on time, costs and improve competitiveness and productivity. New job opportunities will be created in skilled and unskilled sector in the region. The Custom House plans to have more such programs to ensure that all questions/ queries are transparently answered by third party health experts.


05/12/18
SUMIT KUMAR, IRS
COMMISSIONER OF CUSTOMS
Date: 05.12.2018